



MI'GMAWEI MAWIOMI SECRETARIAT

GESPIISIQ

**SPECIAL SUMMER ISSUE:
GESPE'GEWA'GI MANAGEMENT PLAN**

GESPE'GEWA'GI

- ACCESS OUR TERRITORY
- WELL-BEING OF OUR TERRITORY
- CONTROL OF OUR TERRITORY



INTRODUCTION

GESPE'GEWA'GI MANAGEMENT PLAN (G.M.P.)

In this issue, we will provide information on what the Gespe'gewa'gi Management Plan (GMP) is.

It's important to know that the GMP will have tremendous impacts upon the way the Mi'gmaq use and occupy the territory.

The Gespe'gewa'gi Management Plan will be a vital document and tool that will greatly improve the economical, social and political situation of the Mi'gmaq of Gespe'gewa'gi.

The GMP will help change the status quo and will also force the Crown to engage with us in a meaningful fashion, as they will be unable to ignore our rights and control over our traditional territory of Gespe'gewa'gi.

GESPESIQ

MARCH 2017

MI'GMAWEI MAWIOMI SECRETARIAT

Office Address/ Adresse du bureau

2 Riverside West • P.O. Box 135
Listuguj, (Qc) • Gespe'gewa'gi, Canada
G0C 2R0

Tel/Tél: (418)-788-1760

Toll free: Sans frais: 1-(800)-370-1760

Fax/Télecopieur: (418)-788-1315

E-mail/Courriel: secretariat@migmawei.ca

Produced and Printed at MMS.

© 2017 Mi'gmawei

Design & Layout: Andrew Lavigne
Contributing Writer: Mathieu Gray-Lehoux

PAGE CONTENT

1

INTRODUCTION

2

WHAT IS THE GESP'EGEWA'GI MANAGEMENT PLAN? / LAND USE PLAN?

3

WHY IS THE GESP'EGEWA'GI MANAGEMENT PLAN NEEDED?

4

WHY IS A LAND USE PLAN NEEDED?

5, 6

ALIENATION MAPS: FOREST DEPLETIONS, OIL & GAS SITES, MINING

7, 8

WHO SHOULD BE INVOLVED IN THE GMP?

9, 10

COMPONENTS OF THE GMP: ACCESS TO THE TERRITORY, WELL-BEING OF THE TERRITORY, CONTROL OVER THE TERRITORY

WHAT IS THE GESPE'GEWA'GI MANAGEMENT PLAN (GMP)?

The GMP is a Land Use Plan from the Mi'gmaq perspective and is a vital tool in the management of our territory. A Land Use Plan is the arrangement of the territory into areas of use, where certain activities can and cannot take place. Essentially it will layout how and where the territory will be used. The focus will be on where development and what kind of development will take place on our territory and protect the areas of Gespe'gewa'gi that are important to the Mi'gmaq way of life. The GMP will create zones that protect areas that are of spiritual, cultural or ecological importance.

The GMP will establish zones of activity and will also establish the criteria for all development across Gespe'gewa'gi. This will help decide whether or not a project can move forward in our territory. An example could be stopping a gravel pit from advancing as it may pose a threat to the health of our all-important rivers. The GMP was created to guide development and ensure that our way of life is protected. These criteria, which will be developed with the communities, will be the foundation of determining whether or not a project meets Mi'gmaq standards permitted to advance.

The GMP will guide development of the territory based on Mi'gmaq values, the principle values being the wellbeing of the territory and access to the territory. For example the GMP will increase the forestry buffer zones that are around rivers. Currently buffer zones Quebec only requires that a 60m buffer zone that limits all use around rivers be in place. Under the GMP we will implement a 100m buffer zone for greater protection of our vital water resources. The different level of zones will be determined in future workshops with community members and leadership. This information will have tremendous impacts as it will protect the land for our future generation as well as lead to economic opportunities for us. It will also open up the way for Mi'gmaq use and occupy our territory.

The GMP will be created based on data from our 2014-2015 Use and Occupancy interviews with Land Users and a series of Vision-Issues-Values (VIV), with members from the three Mi'gmaq communities of Gesgapegiag, Gespeg and Listuguj. This data along with scientific and social/economic information will be combined to create our Gespe'gewa'gi Management Plan.

What is a Land Use Plan?

- A roadmap for how and where development should proceed in our traditional territory of Gespe'gewa'gi.
- A tool to help us minimize impacts from development on our territory.
- A document to make sure Mi'gmaq values and vision influence what happens on our land and waters.
- A process that builds partners with government, industry and our communities towards a shared vision.
- A means to help exert our Aboriginal Rights and Title over our lands and waters.

WHY IS THE GESPE'GEWA'GI MANAGEMENT PLAN NEEDED?

Throughout the history of Canada, the Federal and Provincial governments have had little regard for our Mi'gmaq values and traditions that once governed this land, and passed laws that restricted our governance over Gespe'gewa'gi. Our people were isolated from our territory and this resulted in the federal and provincial reaping all the benefits from developing our territory and left our people with nothing but the consequences. The displacements of the Mi'gmaq lead to the exploitation of the resources of Gespe'gewa'gi in manners disregarding Mi'gmaq values and traditions of sustainability and planning for future generations. As such many of the resources were exploited with little care for their environmental impacts and yielded no benefits to us and left our people with nothing but the consequences.

To this day we are not included in the management and planning of the territory. In fact, we are consulted only once a project is near completion. At this point in a project it is hard to affect any real change. We are also not consulted by the government of Quebec for the opening of new mines or the issuing of licenses and permits for hydrocarbons. The federal and provincial governments treat us only as a checkbox and not a level of government with rights. They decide how and where our territory is developed and

“THE GMP WILL LEAD TO THE MI'GMAQ USING AND OCCUPYING THE WHOLE OF GESPE'GEWA'GI AS WE ONCE WERE.”

they reap all the benefits, whereas our people receive nothing and are forced to deal with the impacts of such development. We gain nothing through this process. It is designed to keep us out of our territory, from exercising our rights to the land and determining our own future.

The GMP is a vital step in ending this trend of keeping our people away from our territory and its resources. The GMP will help us determine how our territory is developed and ensure that development follows our value systems, beliefs and principals once again, as it did before the arrival of Europeans.

Furthermore, the GMP will increase our capacity in caring for our territory as use and development will be done following Mi'gmaq priorities. This will ensure that resources and parts of our territory that are important to our way of life are protected. This GMP will also encourage our people to use and occupy Gespe'gewa'gi. We envision that the Gespe'gewa'gi Management Plan will lead to Mi'gmaq using and occupying the whole of our territory as we once were. The Plan is meant to give confidence to our people to use the territory, as is their right.

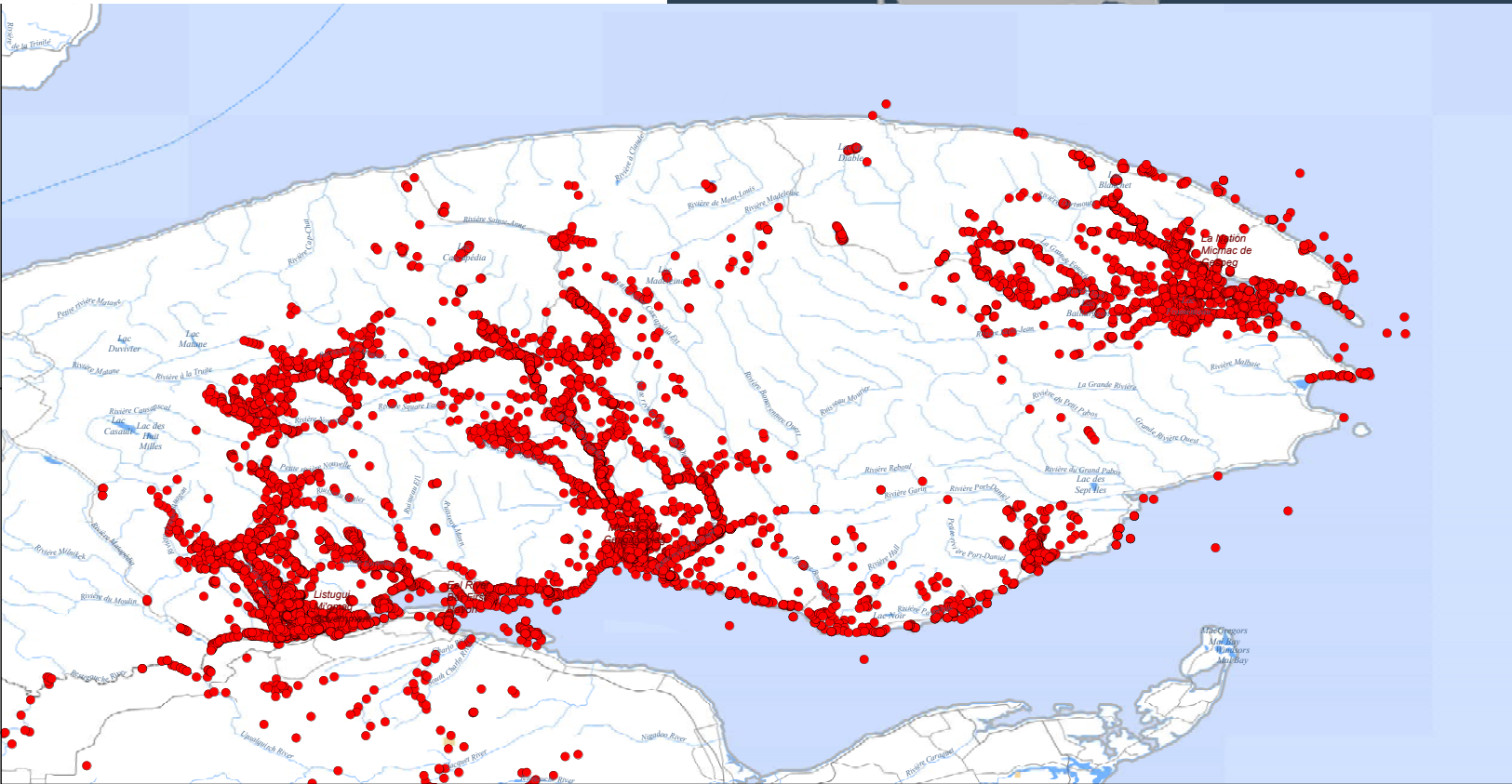
GESPE'GEWA'GI | USE THE TERRITORY

HODGEPODGE MAP

The map below shows a sample of the Mi'gmaq use and occupancy of our traditional territory of Gespe'gewa'gi.

The next 2 pages show maps of Industry use within the same area.

GESPE'GEWA'GI



Data contained in this map is without prejudice and is privileged and confidential. For internal discussion only - not for circulation or distribution. Some data provided by MERN.

Map created by MMS,
October 5, 2016
For more information,
please contact:
MMS Consultation &
Accommodation Unit
Tel: 418-877-1760



Hodgepodge Map of Mi'gmaq Use and Occupancy

● Mi'gmaq Usage Point



0 10 20 30
Km
1:1,000,000

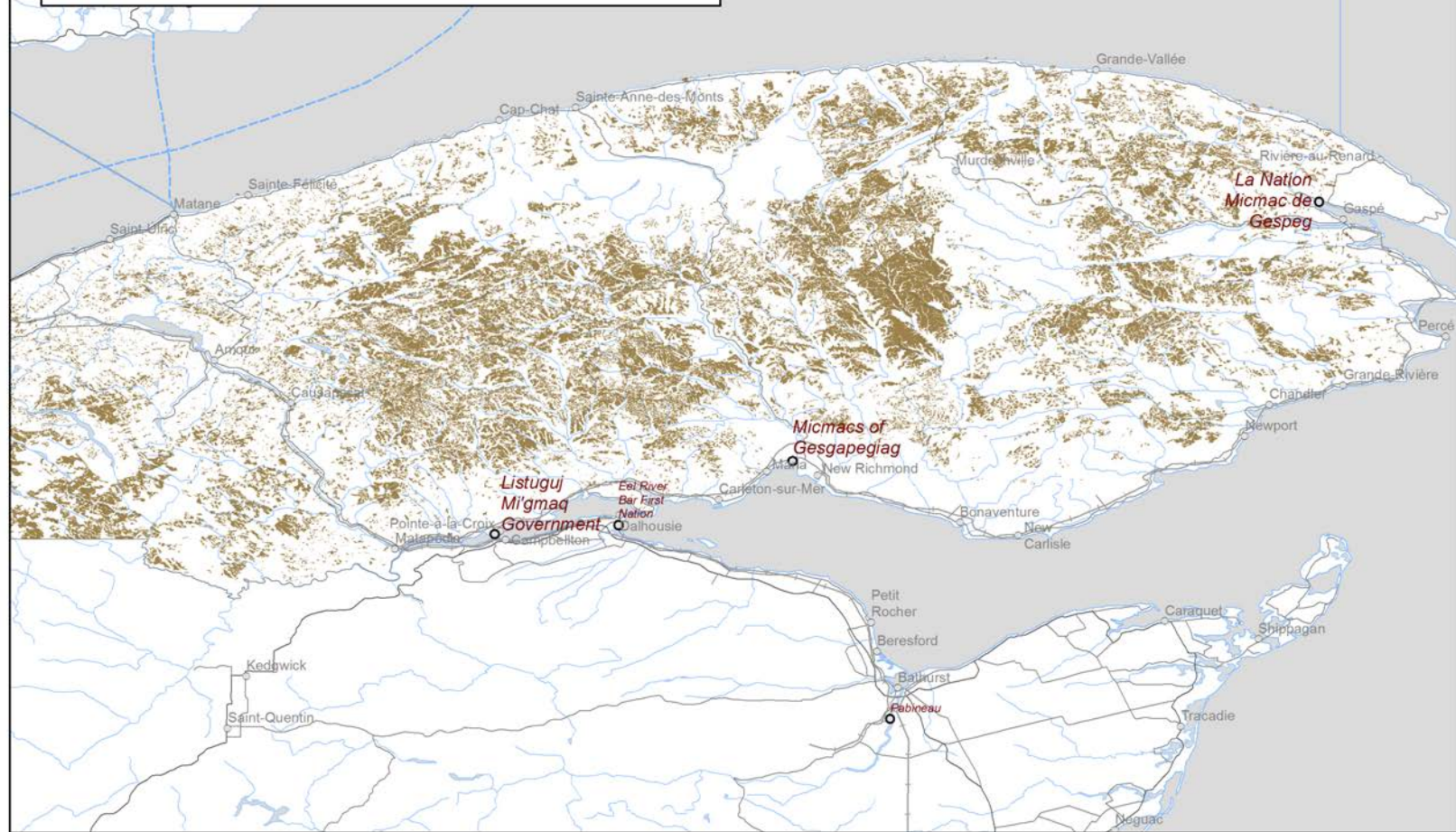
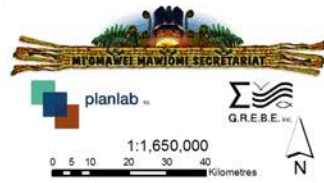
Why is a Land Use Plan needed?

- Almost 100% of our Claim area has been “alienated” by outside interests (See next page of Maps).
- Communities are being consulted and do not possess the proper tools to assess those consultation requests.
- The Plan is a vital step in self-governance and strengthening our control and management of our territory.
- This is Mi'gmaq territory and our knowledge and usage of it is essential.
- The Plan will allow the Mi'gmaq to once again fully use and occupy the territory that was and continues to be rightfully ours.

Forest Depletions in Gespe'gewa'gi

Forest Depletions (2010)

Map produced by: D. Carruthers, PlanLab Ltd.
for the Mi'gma'wei Mawio'mi Secretariat
April 20, 2015



Development of our territory has been taking place without our input and guidance. Development has further alienated us from our traditional territory of Gespe'gewa'gi.

The maps on these pages show the range and breadth of the Forestry, Oil & Gas, and Mining Industries.

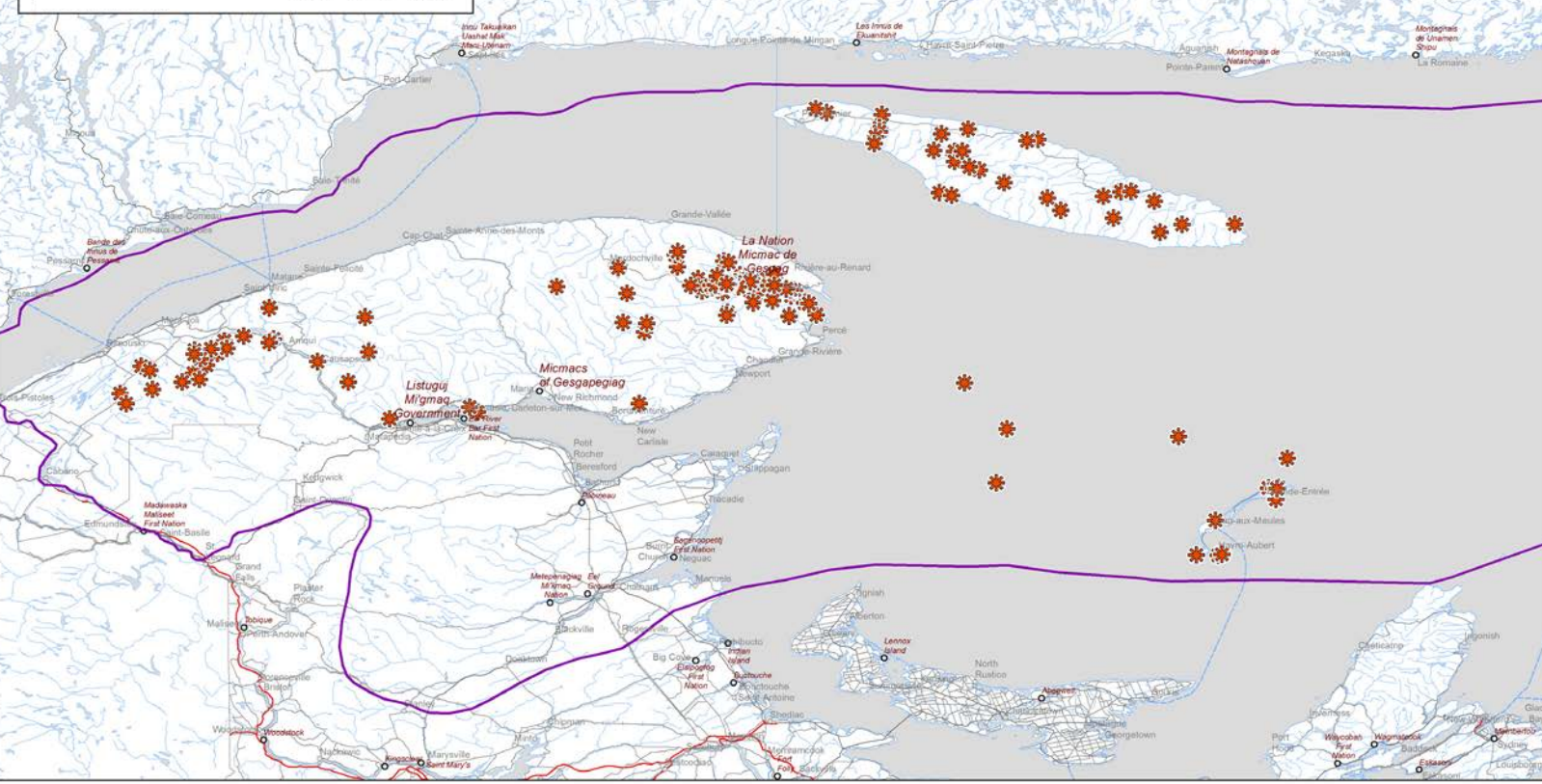
GESPE'GEWA'GI PROTECT THE TERRITORY

Oil and Gas Well Sites in Gespe'gewa'gi

□ MMS Title Area

✿ Oil and Gas Well Site - 2015

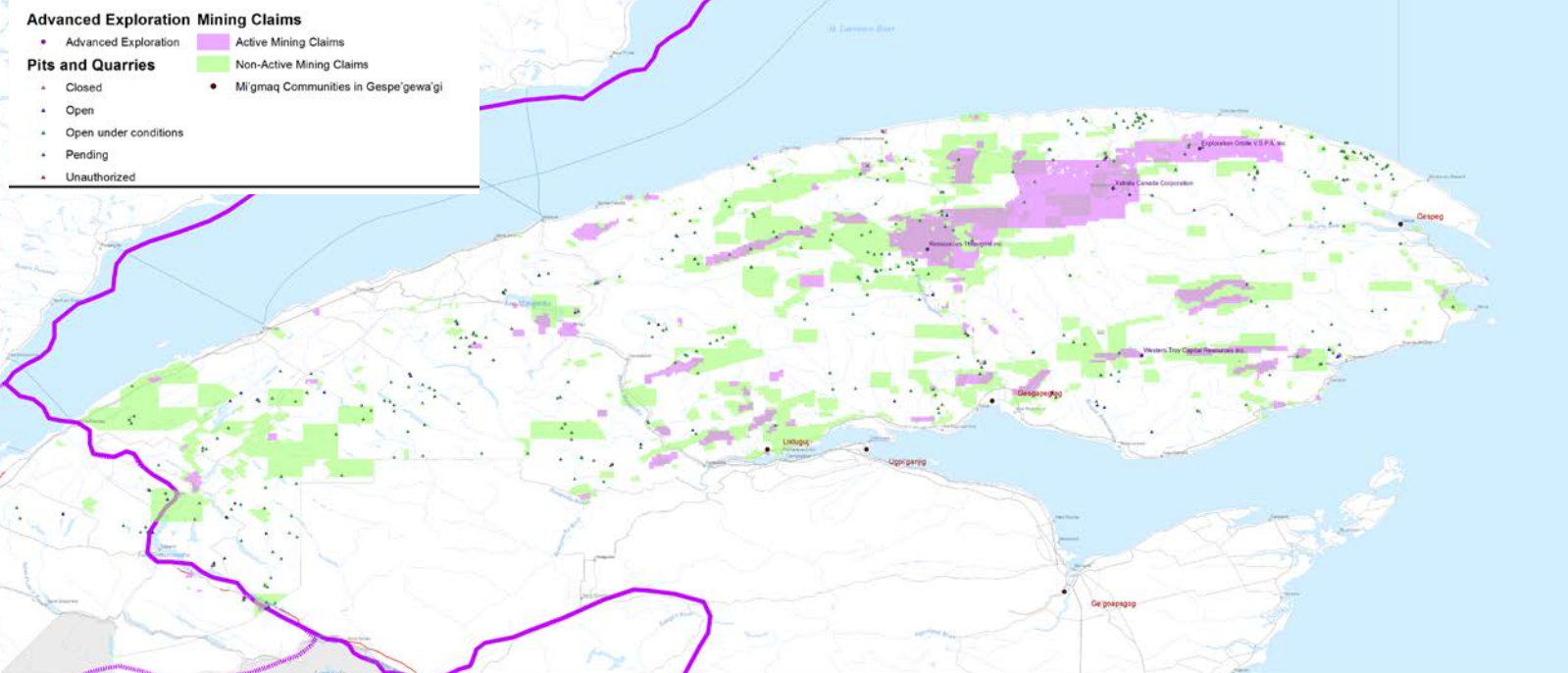
Map produced by: D. Carruthers, PlanLab Ltd.
for the Mi'gma'wei Mawio'mi Secretariat
May 7, 2015



Advanced Exploration Mining Claims

• Advanced Exploration □ Active Mining Claims
 □ Pits and Quarries □ Non-Active Mining Claims

- Closed
 - Open
 - Open under conditions
 - Pending
 - Unauthorized
- Mi'gmaq Communities in Gespe'gewa'gi



MMS Alienation Atlas: Mining

The Mi'gmaq have always lived on, used and occupied this territory. We are working together to claim land and resources that we have never given or surrendered to any person or any other government.

Our territory of Gespe'gewa'gi lies in Québec, New Brunswick and a large section of the St. Lawrence River. The boundaries of our primary claim are shown on the map above.

MINING

Like oil and gas, mineral resources are not always visible to the eye. Exploration and mining is a big business, and depending on the mineral's value, prospectors invest very large sums to explore and remove deposits under the earth's surface (subsurface mining). On the other hand, developers can usually find and remove surface minerals like sand, gravel, clay, and construction fill in many locations and at reasonable cost.

The Québec government says it "promotes the development of mineral resources, while taking other possible uses of the territory into consideration. It... allows the broadest possible access to the territory to everyone, regardless of means, on a first come first served basis..." This means that anyone can enter the mining business, and many companies have, as indicated on the above map.

The map shows that, almost all of Gespe'gewa'gi is leased out to companies for the purpose of mining. Most of these leases have been issued without any consultation with the Mi'gmaq.



0 12.5 25 50 75 100 Kilometres
 1:700,000 1 cm = 7 km

This map is the property of the MMS and may not be viewed, reproduced, or distributed without permission from the MMS. Permission to use this map does not lessen the user's obligation to consult with the MMS regarding any activity that can impinge on MMS interest, jurisdiction, rights or title.

Map produced by Mi'gma'wei Mawio'mi Secretariat
 March 7, 2017
 For more information, please contact:
 Terri Lynn Munnson, Director
 Anq'itrag Mawio'mi Unit, MMS
 Tel: 418-786-1760, ext. 6142

"... an aboriginal society asserting the right to live on its ancestral lands must specify the area which has been continuously used and occupied. That is, the general boundaries of the occupied territory should be identified. I recognize, however, that when dealing with vast tracts of territory it may be impossible to identify geographical limits with scientific precision. Nonetheless, this should not preclude the recognition of a general right of occupation of the affected land. Rather, the drawing of exact territorial limits can be settled by subsequent negotiations between the aboriginal claimants and the government."
 Delgamuukw v. British Columbia, [1997] 3 S.C.R. 1010, per La Forest, J., at para. 195



WHO SHOULD BE INVOLVED IN THE GMP?



The success of the GMP requires actions from many levels of our society, such as our elders, our youth, and our leadership. The Plan is but a part of our Nation building process. The Gespe'gewa'gi Management Plan is a step towards a self-sustaining and independent Mi'gmaq government that is based on a constitution that promotes and protects the rights, freedoms and well being of our people. We have had, since time immemorial, an inalienable title to the land and waters of Gespe'gewa'gi, as such it is our duty to protect and treat our home with respect. It is this relationship with our territory that compels us to action. The repatriation of our territory requires the actions of all levels of government and the participation of all our members. The Gespe'gewa'gi Management Plan is an important step in the process of self-determination, yet it is but a single step. Many more will be needed.



In order to strengthen our presence on the territory and control of Gespe'gewa'gi our communities must also get involved and encourage members to exercise their rights to use and occupy all of Gespe'gewa'gi.

We need individuals to carry out steps that will advance our cause. Individuals who can and want to use the territory must step out and use the entirety of the territory. It is our inherent right and shared history that allows us to use all of our territory. With these simple but important steps we break down the colonial notions of alienation and oppression. The actions will strengthen our control of the territory.



The leadership of Gespe'gewa'gi must lead in the creation and more importantly the implementation of the Management Plan. Promotion and support the Gespe'gewa'gi Management Plan from leadership, community members will be vital to its success. It is the purview of Mi'gmaq leadership to determine the structure of the governance vehicle that will be implementing the plan.

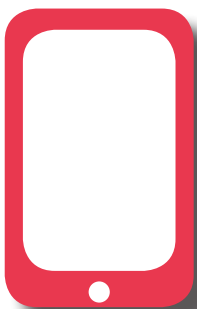
The government of Canada and Quebec must also follow and respect the treaties that they signed in friendship. They must become partners with us and work with us to develop and implement the GMP, which will protect the well-being and viability of our Mi'gmaq territory.



**- GET INVOLVED
- SHOW YOUR SUPPORT**

SOCIAL MEDIA IS A WAY TO GET INVOLVED. USE THESE HASHTAGS BELOW.

**#GespegewagiPride #MyMigmaqSide #MigmaqRights
#GespegewagilsMyHome #IAmMigmaq**



COMPONENTS OF THE GMP

The GMP will be based on a series of studies that have or are to be completed. The most important of these studies are as follows on these two pages.

- The Visions, Issues and Values
- Our Toponomy Study and our Traditional Use Study
- The Use and Occupancy Study



VISIONS, ISSUES AND VALUES (VIV)

The VIV is our most recently completed study and of critical importance as it identified Mi'gmaq priorities. We conducted a series of interviews with members from each of our three communities. The subject of these interviews was the territory and visions, issues and values the members have for it.

The results can be summarized in three broad principles:

- ACCESS TO THE TERRITORY
- WELL-BEING OF THE TERRITORY
- CONTROL OVER THE TERRITORY



GESPEG



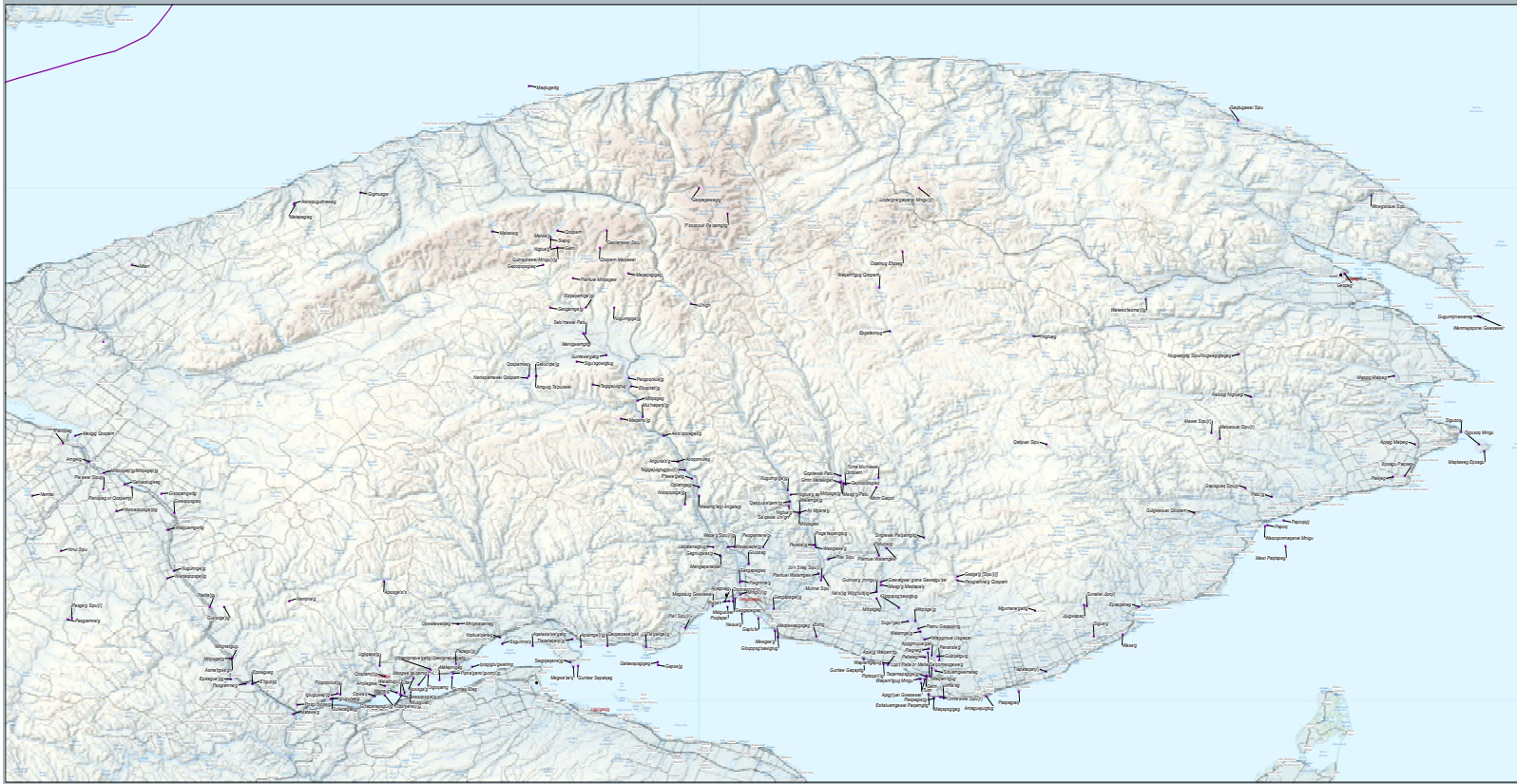
GESGAPEGIAG



LISTUGUJ

OUR TOPONYMY STUDY AND OUR TRADITIONAL USE STUDY (TUS)

These studies are part of the foundation of the GMP, as it allows us to demonstrate the reach of Gespe'gewa'gi. We also included these studies as they show us where our Mi'gmaq used the territory in the past, before and during the reign of policies from the Federal and Provincial governments that alienated our Nation from our territory.



Mi'gmaq Toponyms of Gespe'gewa'gi

Courtesy to popular belief. Lounen topon is not simply random text. It has roots in a piece of classical Latin literature from 45 BC, making it over 2000 years old. Richard McCracken, a Latin professor at Hampshire College in Virginia, looked at one of the more obscure Latin words, connected to a Lounen toponym, and going through the class of the world's classical literature discovered the unbelievable source. Lounen topon comes from sections 1.1.12 and 1.1.20 of "The Fines Boreum et Marium" (The Children of Good and Evil) by Cicero, written in 45 BC. This book is a treatise on the theory of ethics, very popular during the Renaissance. The first line of Lounen topon, "Lounen topon odor at ariet." comes from a line in section 1.1.12.

Courtesy to popular belief. Lounen topon is not simply random text. It has roots in a piece of classical Latin literature from 45 BC, making it over 2000 years old. Richard McCracken, a Latin professor at Hampshire College in Virginia, looked at one of the more obscure Latin words, connected to a Lounen toponym, and going through the class of the world's classical literature, discovered the unbelievable source. Lounen topon comes from sections 1.1.12 and 1.1.20 of "The Fines Boreum et Marium" (The Children of Good and Evil) by Cicero, written in 45 BC. This book is a treatise on the theory of ethics, very popular during the Renaissance. The first line of Lounen topon, "Lounen topon odor at ariet." comes from a line in section 1.1.12.

This map is a derivative work of the original map created by the Mi'gmaq Nation. It is intended for educational purposes only. The Mi'gmaq Nation is not responsible for any errors or omissions in this map. The Mi'gmaq Nation is not responsible for any damage or loss resulting from the use of this map. The Mi'gmaq Nation is not responsible for any copyright infringement or other legal issues resulting from the use of this map. The Mi'gmaq Nation is not responsible for any damage or loss resulting from the use of this map. The Mi'gmaq Nation is not responsible for any copyright infringement or other legal issues resulting from the use of this map.



THE USE AND OCCUPANCY STUDY (UOS):

This study is the core of our GMP. In this study we conducted interviews with 119 land users from all three communities. Through these interviews we were able to map out a sample of the current use and occupancy of our territory by our Mi'gmaq. This study is vital for the GMP as it shows where and how our people are using our territory and which areas are of greater importance to the Mi'gmaq.

Le concours se termine le 28 avril 2017

**Ne manquez pas la chance de gagner
et d'avoir votre histoire
publiée!**



**PRIX D'AUTEUR
MI'GMAQ
WRITERS AWARD**

Une initiative du Secrétariat Mi'gmawei Mawiomí - [Facebook.com/MigmaqWritersAward](https://www.facebook.com/MigmaqWritersAward)

Contest closes April 28, 2017

**Don't miss your chance to win
and have your short story
published.**



**MI'GMAQ
WRITERS AWARD**

An initiative of the Mi'gmawei Mawiomí Secretariat - [Facebook.com/MigmaqWritersAward](https://www.facebook.com/MigmaqWritersAward)