

MI'GMAWEI MAWIOMI SECRETARIAT

# GESPISIQ

SPECIAL SUMMER 2017 ISSUE:

## Gespe'gewagi Management Plan

What is a GMP?



It's a Land Use Plan developed by Mi'gmaq People

The GMP will lead to many economic opportunities for the Mi'gmaq People

Protect & Empower our Rights

# INTRODUCTION

## **GESPE'GEWA'GI MANAGEMENT PLAN (G.M.P.)**

In this Special issue, we will share information on the Gespe'gewa'gi Management Plan (GMP).

It's important to know that the GMP will have tremendous impacts upon the way the Mi'gmaq use and occupy the territory.

The Gespe'gewa'gi Management Plan will be a vital document and tool that will greatly improve the economical, social and political situation of the Mi'gmaq of Gespe'gewa'gi.

The GMP will help change the status quo and will also force the Crown to engage with us in a meaningful fashion, as they will be unable to ignore our rights and control over our traditional territory of Gespe'gewa'gi.



## **GESPESIQ**

SUMMER 2017

MI'GMAWEI MAWIOMI SECRETARIAT

**Office Address/ Adresse du bureau**

2 Riverside West • P.O. Box 135  
Listuguj, (Qc) • Gespe'gewa'gi, Canada  
G0C 2R0

Tel/Tél: (418)-788-1760

Toll free: Sans frais: 1-(800)-370-1760

Fax/Télecopieur: (418)-788-1315

E-mail/Courriel: [secretariat@migmawei.ca](mailto:secretariat@migmawei.ca)

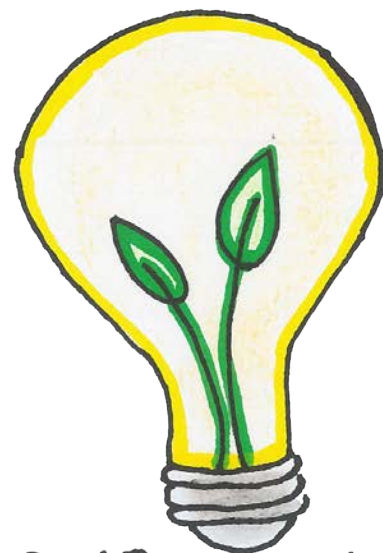
Produced and Printed at MMS.

© 2017 Mi'gmawei

Design & Layout: Andrew Lavigne

Contributing Writer: Mathieu Gray-Lehoux

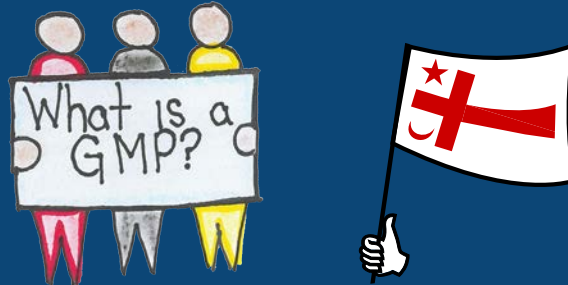
Artist Drawing: LaCrisa Wysote



The GMP will establish  
criteria for all development  
across Gespe'gewa'gi

# What is the Gespe'gewa'gi Management Plan (G.M.P.)?

The GMP is a Land Use Plan from the Mi'gmaq perspective.



## What is a Land Use Plan?

A Land Use Plan is the arrangement of the territory into areas of use, where certain activities can and cannot take place.

## Why is a Gespe'gewa'gi Management Plan needed?

- The GMP will establish the criteria for all development across Gespe'gewa'gi.
- The GMP will protect the land for our future generations and lead to economic opportunities for the Mi'gmaq.
- The GMP will combine cultural knowledge and scientific data.

# WHY IS THE GESPE'GEWA'GI MANAGEMENT PLAN NEEDED?

The Federal and Provincial governments have little regard for our Mi'gmaq values and traditions that once governed over Gespe'gewa'gi. Laws were passed to restrict our relationship and governance over our home and territory.

The Federal and Provincial reaped all the benefits from developing our territory and left our people with nothing but the consequences.

The GMP is a tool that will allow the Mi'gmaq to determine how Gespe'gewa'gi is developed and ensures that it follows our Mi'gmaq value systems, beliefs and principles.

The Plan is also meant to give confidence to our people to use the territory, as it is their right. We envision the Mi'gmaq using and occupying the whole of Gespe'gewa'gi as we once did.



## VISIONS, ISSUES AND VALUES (VIV)

The VIV is our most recently completed study and of critical importance as it identified Mi'gmaq priorities. We conducted a series of interviews with members from each of our three communities. The subject of these interviews was the Visions, Issues and Values the members have for the territory.

The results can be summarized in three broad principles:

- ACCESS TO THE TERRITORY
- WELL-BEING OF THE TERRITORY
- CONTROL OVER THE TERRITORY

# GESPE'GEWA'GI

# USE THE TERRITORY

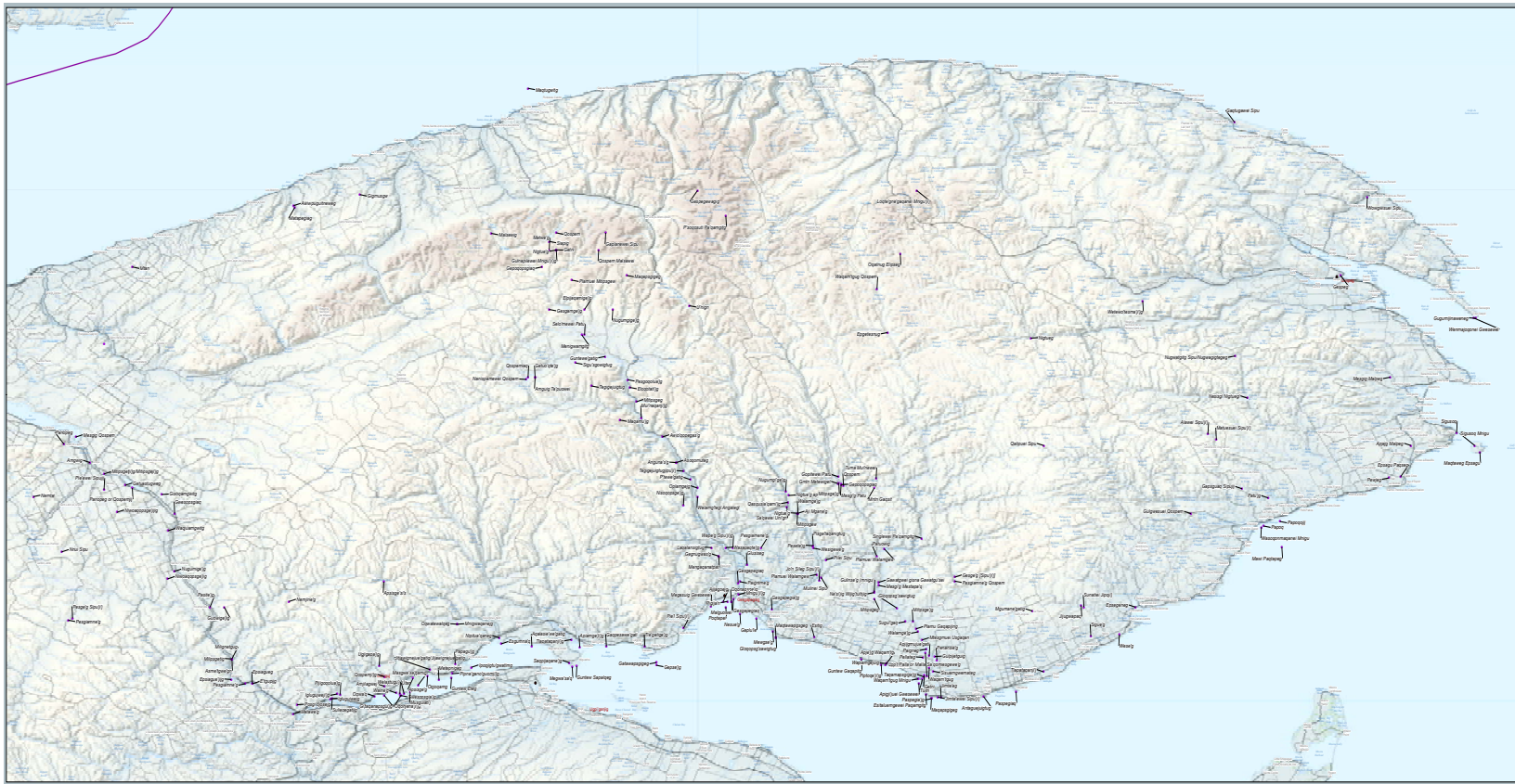
# COMPONENTS OF THE GMP

The GMP will be based on a series of studies that have or are to be completed. The most important of these studies are:

- Our Toponymy Study and our Traditional Use Study(TUS)
- The Use and Occupancy Study (UOS)

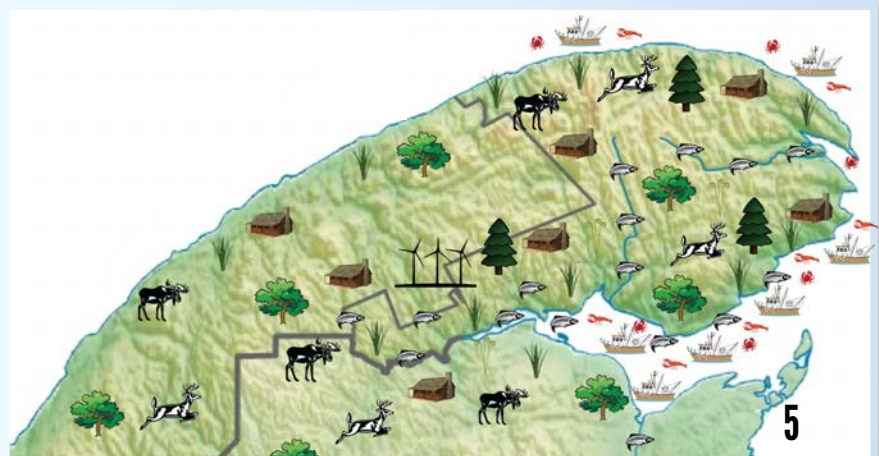
## OUR TOPONYMY STUDY AND OUR TRADITIONAL USE STUDY (TUS)

These studies show us where our Mi'gmaq used the territory in the past, before and during the reign of policies from the Federal and Provincial governments that alienated our Nation from our territory.




## THE USE AND OCCUPANCY STUDY (UOS):

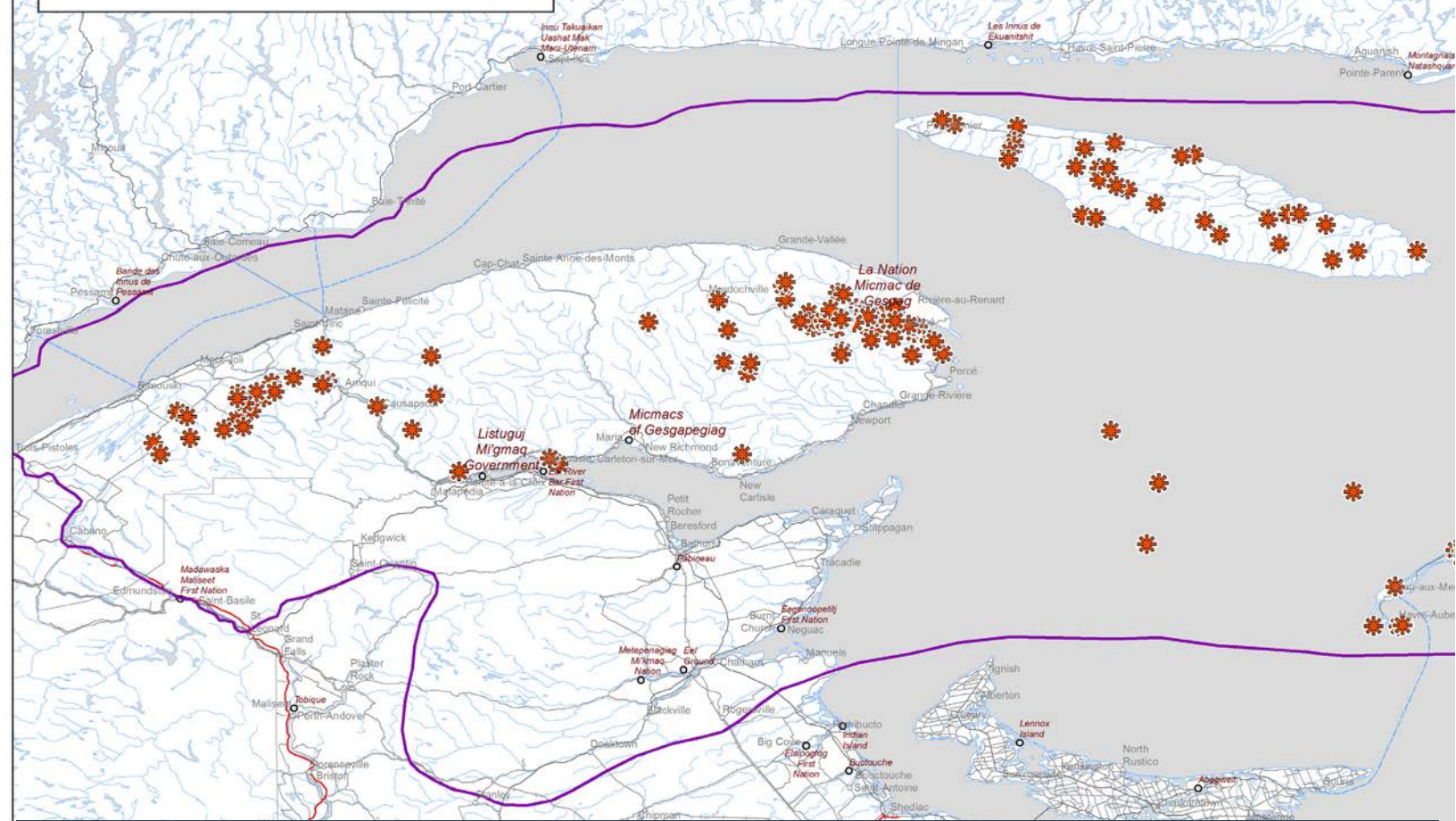
This study is the core of our GMP. In this study we conducted interviews with 119 land users from all three communities. This study is vital for the GMP as it shows where and how our people are using our territory and which areas are of greater importance to the Mi'gmaq.



## Oil and Gas Well Sites in Gespe'gewa'gi

 MMS Title Area

 Oil and Gas Well Site - 2015



**DEVELOPMENT OF OUR TERRITORY HAS BEEN TAKING PLACE WITHOUT OUR INPUT AND GUIDANCE. DEVELOPMENT HAS FURTHER ALIENATED US FROM OUR TRADITIONAL TERRITORY OF GESPE'GEWA'GI.**

**AN OIL AND GAS WELL SITE IS THE PHYSICAL LOCATION WHERE OIL & GAS IS DRILLED.**

**THESE WELLS ARE WHERE HYDROCARBON COMPANIES DRILL INTO THE GROUND TO CREATE AN OPENING.**

**GESPE'GEWA'GI PROTECT THE TERRITORY**

# WHO SHOULD BE INVOLVED IN THE GMP?

## EVERYONE SHOULD BE INVOLVED!

- Mi'gmaq Citizens

- Youth

- Elders

- Mi'gmaq Governments

- Non-Mi'gmaq

- Federal Governments

- Provincial Governments



The Plan  
is meant to  
empower  
our people to  
use the territory.



This is  
YOUR  
RIGHT!



**- GET INVOLVED  
- SHOW YOUR SUPPORT**

**SOCIAL MEDIA IS A WAY TO GET INVOLVED. USE THESE HASHTAGS BELOW.**

**#GespegewagiPride #MyMigmaqSide #MigmaqRights  
#GespegewagilsMyHome #IAmMigmaq**

